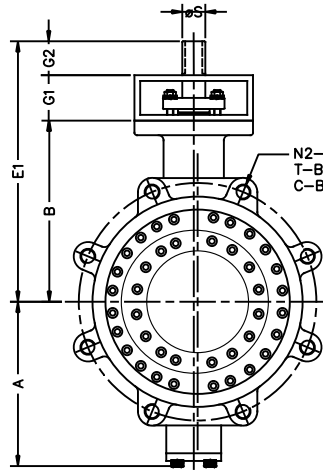
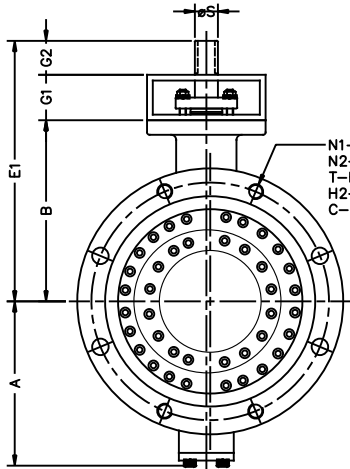


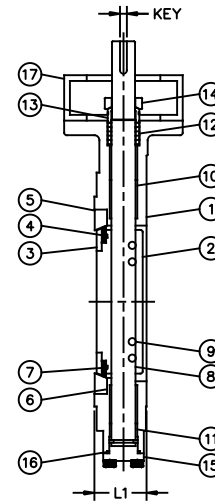
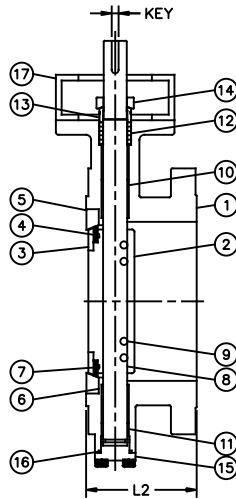
N1—NUMBER OF HOLES
H1—HOLE DIA.
T—BOLT DIA.
C—B.C.D



N2—NUMBER OF TAP HOLES
T—BOLT DIA.
C—B.C.D



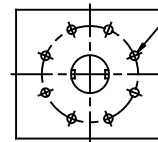
N1—NUMBER OF HOLES
N2—NUMBER OF TAP HOLES
T—BOLT DIA.
H2—HOLE DIA.
C—B.C.D



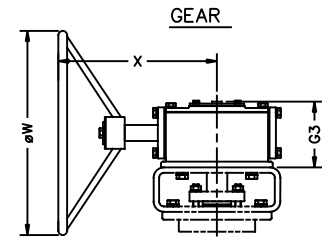
No.	Part Name
1	Body
2	Disc
3	Disc Retainer
4	Disc Seat
5	Body Seat
6	Body Seat Gasket
7	Disc Seal Gasket
8	Shaft
9	Disc Pin
10	Shaft Bearing
11	Thrust Bearing
12	Packing
13	Packing Gland
14	Gland Flange
15	End Cap
16	End Gasket
17	Bracket

Test Pressure(Psi-G) API 598		
	Hydraulic	Air
Shell	450	325
Seat	325	90

TOP WORKS



M—HOLE DIA.
P—NUMBER OF HOLES
R—BOLT CIRCLE DIA.



SIZE (inch)	A	B	G1	G2	E1	L1	L2	C	T	FLANGED DRILLING						TOP WORKS				KEY	GEAR		
										WAFER		LUG		FLANGE		M	P	R	S		G3	X	øW
										N1	H1	N2	N1	N2	H2								
3	4.77	5.31	2.76	1.38	9.45	1.89	4.49	6.00	5/8"X11UNC	2	3/4	4	4	-	3/4	0.43	4	4.02	0.75	0.24 X 0.24	3.46	7.66	9.84
4	5.87	6.30	2.76	1.38	10.44	2.13	5.00	7.50	5/8"X11UNC	4	3/4	8	4	4	3/4	0.43	4	4.02	0.87	0.31 X 0.28	3.46	7.66	9.84
6	7.13	8.27	3.15	1.57	12.99	2.24	5.51	9.50	3/4"X10UNC	2	7/8	8	4	4	7/8	0.43	4	4.02	1.02	0.31 X 0.28	3.46	7.66	9.84
8	8.11	9.25	3.15	1.97	14.37	2.52	5.98	11.75	3/4"X10UNC	2	7/8	8	4	4	7/8	0.51	4	4.92	1.14	0.31 X 0.28	3.96	9.67	11.81
10	9.84	10.83	3.54	2.36	16.73	2.80	6.50	14.25	7/8"X9UNC	4	1	12	8	4	1	0.67	4	5.51	1.38	0.39 X 0.31	4.06	10.81	15.75

NOTE.

- DESIGN : ANSI B16.34 & API 609
- FLANGE CONNECTION : ANSI B16.5 CLASS 150
- FACE TO FACE DIMENSION :
 WAFER , LUGGED TYPE - API 609 CATEGORY B
 FLANGED TYPE - EIGHTH EDITION API 609 CATEGORY B
 (ISO 5752 SERIES 13)

File No.	TP150WLF0310_01
Title	TRIPLE OFFSET VALVE 150# WAFER, LUGGED & FLANGED TYPE
Scale	NOT TO SCALE
Date of Issue	2015-10-23
DWG No.	TP150WLF0310-01

Drawn by	Kim, S.S
Checked by	Byeon, J.S
Approved by	Choi, J.Y
Date	
Revision	

PRATT INDUSTRIAL

THE INFORMATION CONTAINED IN THIS DRAWING IS THE SOLE PROPERTY OF PRATT INDUSTRIAL. ANY REPRODUCTION IN PART OR AS A WHOLE WITHOUT THE WRITTEN PERMISSION OF PRATT INDUSTRIAL IS PROHIBITED.