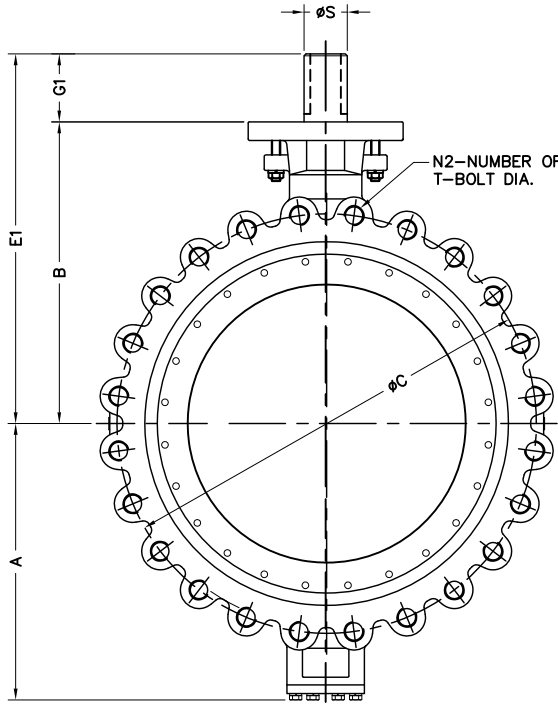
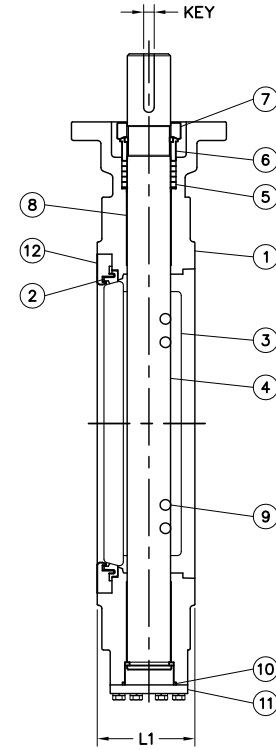


N1—NUMBER OF HOLES
H1—HOLE DIA.
N2—NUMBER OF TAP HOLES
T—BOLT DIA.



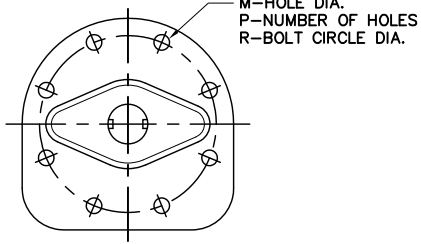
N2—NUMBER OF TAP HOLES
T—BOLT DIA.



No.	Part Name
1	Body
2	Seat
3	Disc
4	Stem
5	Packing
6	Packing Gland
7	Gland Flange
8	Bush Bearing
9	Disc Pin
10	Cap Packing
11	Cap
12	Seat Retainer

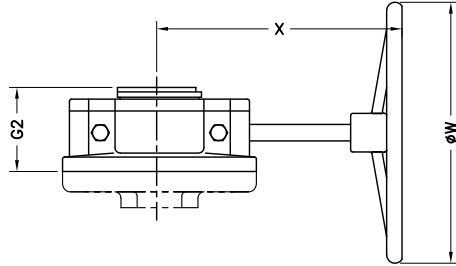
Test Pressure(Psi-G)		
API 598		
	Hydraulic	Air
Shell	1125	825
Seat		-

TOP WORKS



M—HOLE DIA.
P—NUMBER OF HOLES
R—BOLT CIRCLE DIA.

GEAR



SIZE (inch)	A	B	G1	E1	L1	C	T	Flanged Drilling				TOP WORKS				KEY	Gear		
								Wafer		Lug		M	P	R	S		G2	X	W
								N1	N2	H1	N2								
8	8.77	10.24	2.01	12.25	2.87	13.00	7/8"X9UNC	2	-	1	12	0.55	4	5.00	1.124	0.25 X 0.25	3.74	8.98	11.02
10	9.84	11.42	2.01	13.43	3.27	15.25	1"X8UNC	-	4	-	16	0.55	4	5.00	1.124	0.25 X 0.25	3.74	8.98	11.02
12	11.06	12.80	2.09	14.89	3.62	17.75	1-1/8"X8UN	-	4	-	16	0.55	4	5.00	1.374	0.31 X 0.31	3.74	8.98	11.02
14	13.11	14.76	2.99	17.75	4.61	20.25	1-1/8"X8UN	-	4	-	20	0.83	4	6.50	1.874	0.50 X 0.50	5.04	12.60	15.12
16	14.88	16.73	2.99	19.72	5.24	22.50	1-1/4"X8UN	-	4	-	20	0.83	4	6.50	2.122	0.50 X 0.50	5.04	12.60	15.12
18	16.53	18.31	4.02	22.33	5.87	24.75	1-1/4"X8UN	-	4	-	24	0.75	8	10.00	2.555	0.75 X 0.50	5.12	16.93	23.62
20	18.11	19.88	4.02	23.90	6.26	27.00	1-1/4"X8UN	-	4	-	24	0.75	8	10.00	2.555	0.75 X 0.50	5.12	16.93	23.62
24	20.94	22.83	4.45	27.28	7.13	32.00	1-1/2"X8UN	-	4	-	24	0.75	8	10.00	3.146	0.87 X 0.55	6.81	18.82	27.56

NOTE.

- DESIGN : ANSI B16.34 & API 609
- FLANGE CONNECTION : ANSI B16.5 CLASS 300
- FACE TO FACE DIMENSION : API 609 CATEGORY B

File No.	P300WL08_24	Title	HIGH PERFORMANCE VALVE 300# WAFER & LUGGED TYPE
Date of Issue	DO NOT SCALE		
Date of Issue	2014-08-01	DWG No.	300WL02
Rev.			
Drawn by	Kim,S,S	Approved by	Choi,J,Y
Checked by	Kim,S,S		
Date			
Revision			
No.			



THE INFORMATION CONTAINED IN THIS DRAWING IS THE SOLE PROPERTY OF PRATT INDUSTRIAL. IT IS TO BE USED ONLY FOR THE PART OR AS A WHOLE WITHOUT THE WRITTEN PERMISSION OF PRATT INDUSTRIAL IS PROHIBITED.