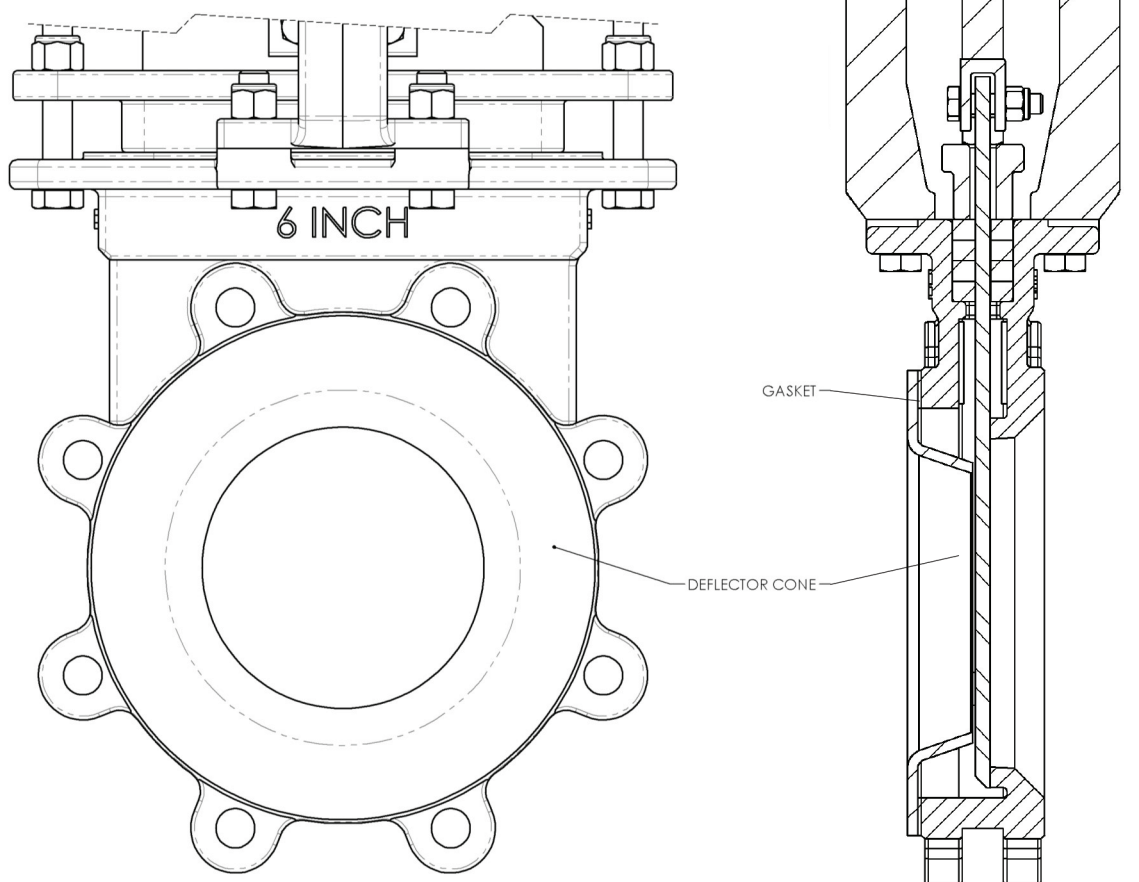


675 Mitchell Avenue
Woodland, WA 98674
Phone: 360-225-1230
888-256-5779
Fax: 360-225-1235
www.henrypratt.com



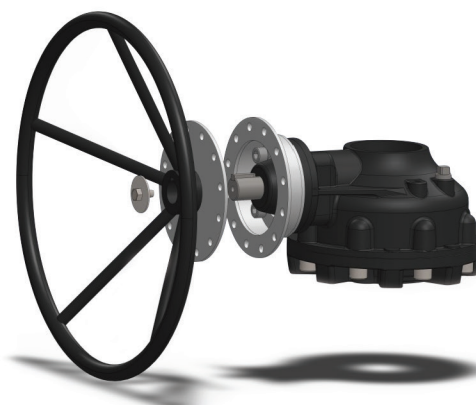
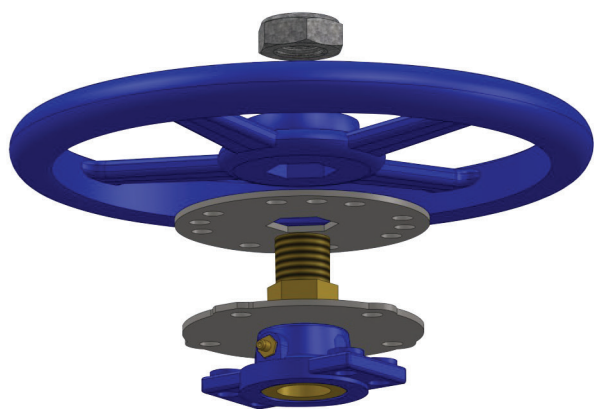
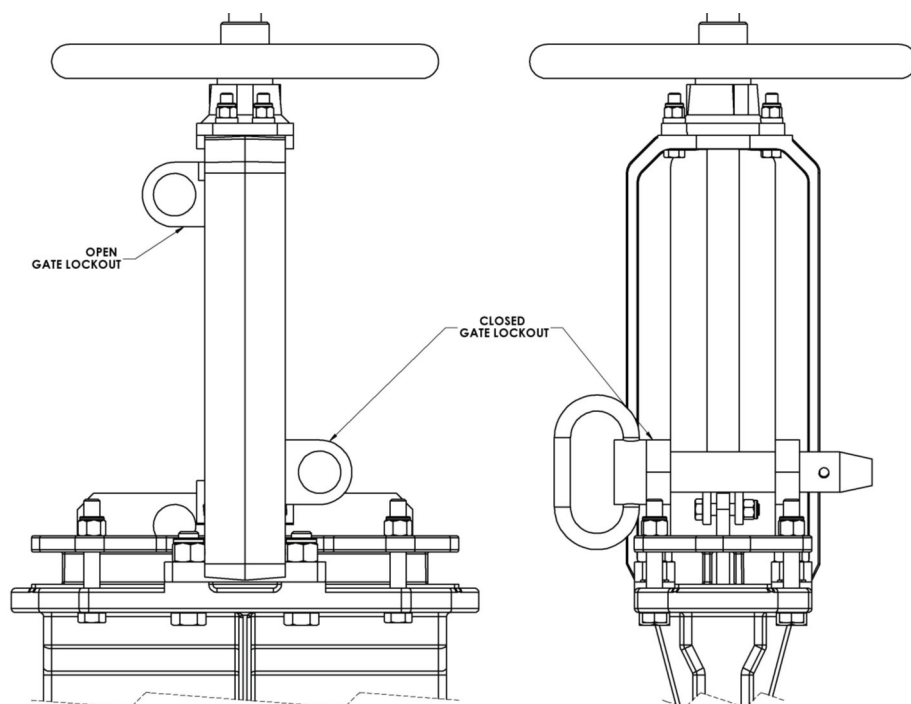
Note

Deflector cones are used to protect the seat and body from wear as well as preventing build up of material on the seat, or from becoming lodged in the valve body chest. Deflector cones come in three material types:

- 316 SS for mildly corrosive and abrasive applications, customizable.
- UHMW for low temperatures, mildly abrasive applications, used as gate wiper.
- Ni-hard for moderately abrasive applications, least expensive.

A rubber gasket is supplied with each deflector cone.

Gate Lockouts



Gate lockout packages are available as open or closed only, or both open and closed.

Lockout packages come in 3 types:

- Yoke lockout, works with either handwheel, cylinder, or bevel gear.
- Handwheel lockout, works only with handwheel.
- Bevel gear lockout, works with all bevel gear operators.

NOTE: Lockout packages include all brackets, pre-drilled holes, locking pins, chain and a means to attach a lock. Padlock not included.

The trademarks, logos and service marks displayed in this document herein are the property of Henry Pratt Company, LLC, its affiliates or other third parties. Products above marked with a section symbol (§) are subject to patents or patent applications. For details, visit www.mwppat.com.

Copyright © 2016 Henry Pratt Company, LLC. All Rights Reserved.

Form 13240 9/2016