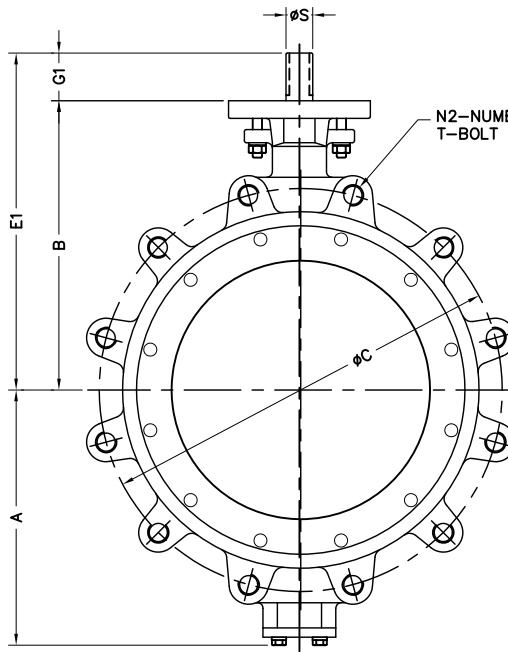
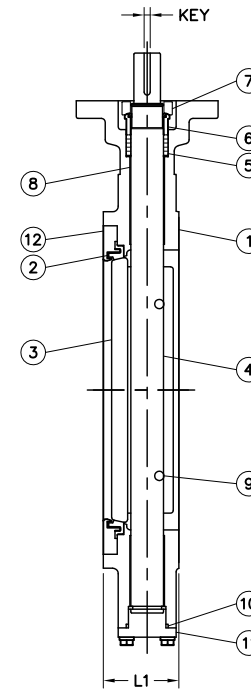


N1—NUMBER OF HOLES
H1—HOLE DIA.
T—BOLT DIA.



N2—NUMBER OF TAP HOLES
T—BOLT DIA.

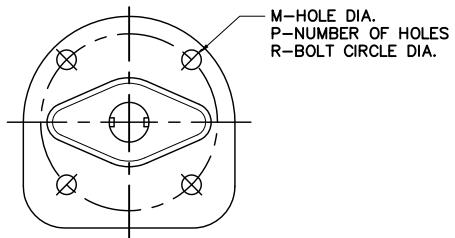


KEY

No.	Part Name
1	Body
2	Seat
3	Disc
4	Stem
5	Packing
6	Packing Gland
7	Gland Flange
8	Bush Bearing
9	Disc Pin
10	Cap Packing
11	Cap
12	Seat Retainer

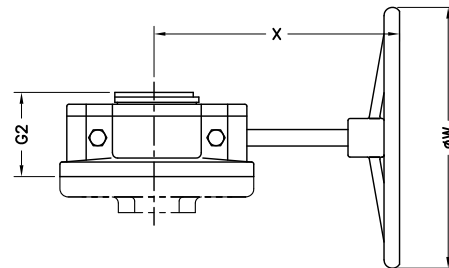
Test Pressure(Psi-G) API 598		
	Hydraulic	Air
Shell	Seat	Seat
450	325	-

TOP WORKS



M—HOLE DIA.
P—NUMBER OF HOLES
R—BOLT CIRCLE DIA.

GEAR



SIZE (Inch)	A	B	G1	E1	L1	C	T	Flanged Drilling				TOP WORKS				KEY	Gear		
								Wafer		Lug		M	P	R	S		G2	X	øW
								N1	N2	H1	N2								
10	8.97	11.02	2.05	13.07	2.83	14.25	7/8"X9UNC	2	-	1	12	0.55	4	5.00	1.124	0.25 X 0.25	3.74	8.98	11.02
12	10.74	12.20	2.01	14.21	3.19	17.00	7/8"X9UNC	2	-	1	12	0.55	4	5.00	1.124	0.25 X 0.25	3.74	8.98	11.02
14	12.12	13.19	2.24	15.43	3.62	18.75	1"X8UNC	2	-	1-1/8	12	0.55	4	5.00	1.374	0.31 X 0.31	3.74	8.98	11.02
16	13.70	15.47	2.99	18.46	4.02	21.25	1"X8UNC	2	-	1-1/8	16	0.83	4	6.50	1.874	0.50 X 0.50	5.04	12.60	15.12

NOTE.

- DESIGN : ANSI B16.34 & API 609
- FLANGE CONNECTION : ANSI B16.5 CLASS 150
- FACE TO FACE DIMENSION : API 609 CATEGORY B

	File No.	P150WL10_16	
	Date of Issue	DO NOT SCALE	
	Date of Issue	2014-08-01	
Revision	Drawn by	Checked by	Approved by
	Kim, S.S	Kim, S.S	Choi, J.Y
Title	HIGH PERFORMANCE VALVE 150# WAFER & LUGGED TYPE		
DWG No.	150WL02		
No.			

THE INFORMATION CONTAINED IN THIS DRAWING IS THE SOLE PROPERTY OF PRATT INDUSTRIAL. IT IS TO BE USED ONLY FOR THE PART OR AS A WHOLE WITHOUT THE WRITTEN PERMISSION OF PRATT INDUSTRIAL IS PROHIBITED.