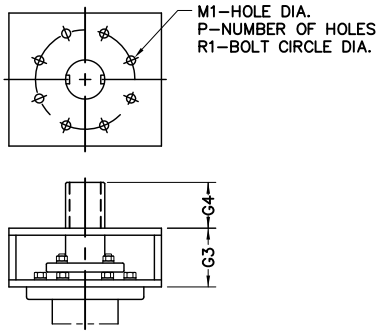
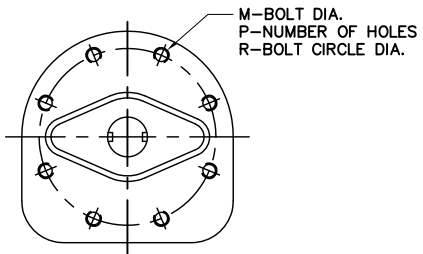


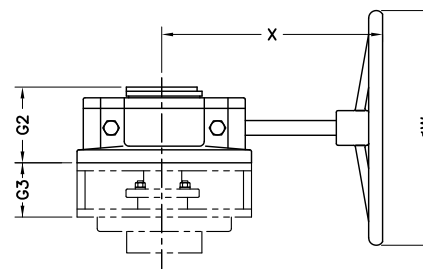
No.	Part Name
1	Body
2	Seat
3	Disc
4	Stem
5	Packing
6	Packing Gland
7	Gland Flange
8	Bush Bearing
9	Disc Pin
10	Cap Packing
11	Cap
12	Seat Retainer

Test Pressure (Psi-G) API 598		
Hydraulic		Air
Shell	Seat	Seat
450	325	-

TOP WORKS



GEAR



NOTE.
 1. DESIGN : ANSI B16.34 & API 609
 2. FLANGE CONNECTION : ANSI B16.47 SERIES A CLASS 150 (MSS SP-44 CLASS 150)
 3. FACE TO FACE DIMENSION : 38" 42" - MANUFACTURER STD
 40" 48" - ISO 5752 SHORT

SIZE (Inch)	A	B	G1	G3	G4	E1	L1	C	T	Flanged Drilling				TOP WORKS			BRACKET		S	KEY	Gear		
										Wafer		H1	Lug N2	M	P	R	M1	R1			G2	X	øW
										N1	N2												
38	27.95	27.56	10.63	5.91	4.72	38.19	8.50	45.25	1-1/2"X8UN	-	4	-	32	M16	8	10.00	0.91	11.73	3.933	1.10 X 0.63	6.69	22.83	27.56
40	30.23	30.12	10.63	5.91	4.72	40.75	8.50	47.25	1-1/2"X8UN	-	4	-	36	M16	8	10.00	0.91	11.73	3.933	1.10 X 0.63	6.69	22.83	27.56
42	31.49	30.71	11.02	6.30	4.72	41.73	9.49	49.50	1-1/2"X8UN	-	4	-	36	M20	8	11.73	0.91	11.73	3.933	1.10 X 0.63	6.69	22.83	27.56
48	35.96	34.65	11.61	6.30	5.31	46.26	10.00	56.00	1-1/2"X8UN	-	8	-	44	M20	8	11.73	0.91	11.73	4.720	1.26 X 0.71	6.69	22.83	27.56

File No.	P150WL38_48	Title HIGH PERFORMANCE VALVE 150# WAFER & LUGGED TYPE	DWG No. 150WL05
Date of Issue	DO NOT SCALE		
Date of Issue	2014-08-01		
Rev.			
Drawn by	Kim,S,S	Revision	Date
Checked by	Kim,S,S		
Approved by	Choi,J,Y		
No.			



THE INFORMATION CONTAINED IN THIS DRAWING IS THE SOLE PROPERTY OF PRATT INDUSTRIAL. NO PART OR AS A WHOLE WITHOUT THE WRITTEN PERMISSION OF PRATT INDUSTRIAL IS PROHIBITED.