

675 Mitchell Avenue
Woodland, WA 98674
Phone: 360-225-1230
888-256-5779
Fax: 360-225-1235
www.henrypratt.com



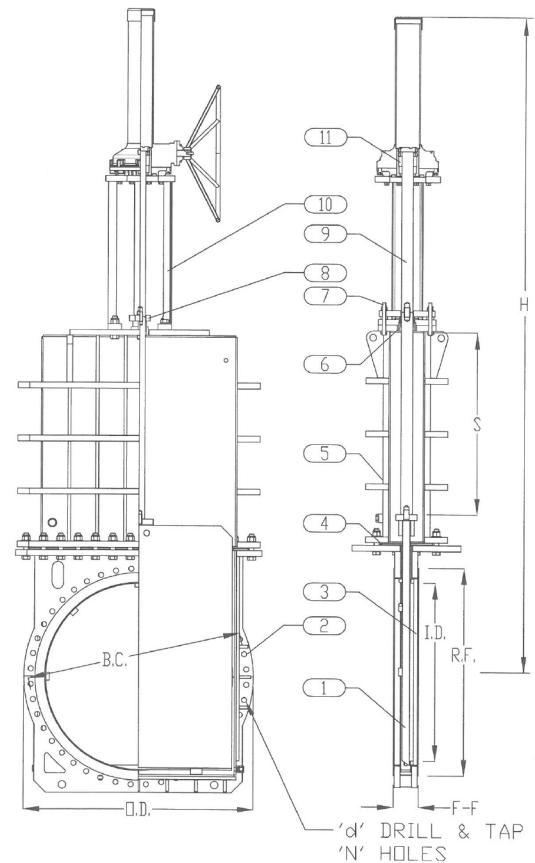
Features

- Fabricated heavy duty bonneted knife gate valves are ideally suited to reduce fugitive emissions and packing leakage.
- All stainless steel construction available.
- Wiper between body and bonnet prevents solids from entering bonnet.
- Fabricated bonnet design pressure same as valve pressure rating.
- Standard TFE lubricated synthetic packing (TLSP) rated for 500° F and a pH range of 3-11.
- Heavy duty body design resists deflection from line loads and internal pressure.
- Gate design withstands full rated pressure.
- Body cavity, seat configuration, and beveled gate design provide shut off capability in thick media such as pulp stock and slurries, or solid media like pellets and powders.
- Heavy fabricated steel yoke prevents bending or twisting under extreme loads.
- Easy conversion from gear operator to pneumatic or hydraulic cylinder, or electric motor operator using existing cast yoke.
- Hard faced seat available to prevent galling in high cycle and/or high end pressure or abrasive applications.
- V-Port or O-Ring resilient seats available to suit specific applications.
- Precision machined stainless steel gate provides superior seating capability.
- Stainless steel stem provides corrosion resistance.
- Flange drilling meets ANSI B16.47 CL150 series A standards with all tapped holes and serrated gasket faces.
- Full port ID.
- Designed in accordance with AWWA C520 Knife Gate Valves, 2" – 96".

LVC Figure F193 Fabricated Bonneted Knife Gate Valve

Materials Code	W44/W66	A44/A66	A77
Body Liner, Seat & RF	304/316	304/316	317
Flanges, Ext. Trim	Steel	304/316	317
Gate	304/316	304/316	317
Packing Gland	Steel	304/316	317
Packing Bolting	304	304	304
Yoke	Steel	304/316	317
Stem & Clevis	304	304	304
Stem Nut	Bronze	Bronze	Bronze
Packing	TLSP	TLSP	TLSP

Model F193
1 Gate
2 Body
3 Seat
4 Wiper
5 Bonnet
6 Packing
7 Bolts
8 Gland
9 Stem
10 Yoke
11 Stem Nut



50 psi standard pressure, other pressures available upon request.

Dimensions (Inches) and Weights, Square Bottom

	Size	30	36	42	48	54	60
Face-to-Face	F-F	4-5/8	5-1/4	5-5/8	6	6-1/2	7-3/4
Flange OD	OD	38-3/4	46	53	59-1/2	66-1/4	73
Bolt Circle	BC	36	42-3/4	49-1/2	56	62-3/4	69-1/4
Flanged Raised Face	RF	34	40-1/4	47	53-3/4	59-3/4	66
Inside Diameter	ID	30	35-7/8	42	47-1/4	54	60
No. of Bolt Holes	N	28	32	36	44	44	52
Hole D&T Size	D	1-1/4-7 UNC	1-1/2-6 UNC	1-1/2-6 UNC	1-1/2-6 UNC	1-3/4-5 UNC	1-3/4-5 UNC
C/L to Top-Stem Cover	H-OPN	120	145	176	205	230	262
Handwheel Dia.	H/W	BG4 W 20" HW	BG4 W 20" HW	BG4 W 20" HW	BG4 W 20" HW	BG6 W 20" HW	BG6 W 20" HW
Weight - lbs	WT	3650	4150	6450	9650	14860	20600
Stroke	S	28-13/16	35	40-1/2	47-1/4	53	59

The trademarks, logos and service marks displayed in this document herein are the property of Henry Pratt Company, LLC, its affiliates or other third parties. Products above marked with a section symbol (§) are subject to patents or patent applications. For details, visit www.mwppat.com.

Copyright © 2016 Henry Pratt Company, LLC. All Rights Reserved.

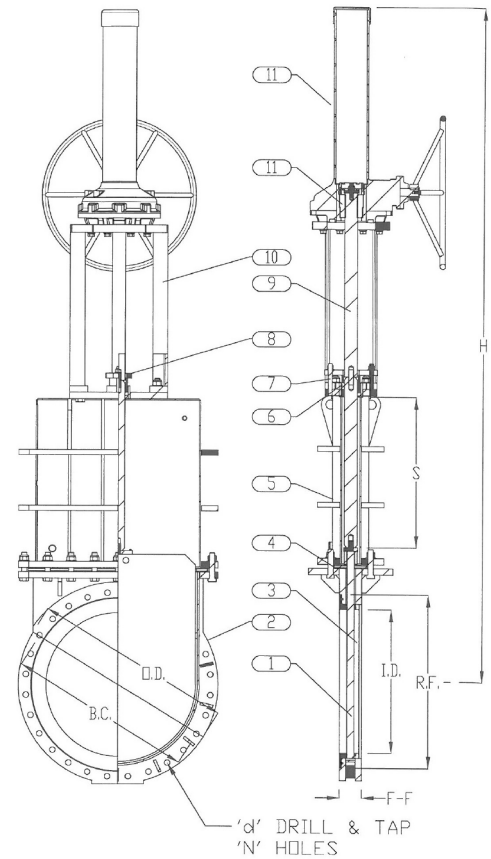
Form 13253 9/2016



LVC Figure F193 Fabricated Bonneted Knife Gate Valve

Materials Code	W44/W66	A44/A66	A77
Body Liner, Seat & RF	304/316	304/316	317
Flanges, Ext. Trim	Steel	304/316	317
Gate	304/316	304/316	317
Packing Gland	Steel	304/316	317
Packing Bolting	304	304	304
Yoke	Steel	304/316	317
Stem & Clevis	304	304	304
Stem Nut	Bronze	Bronze	Bronze
Packing	TLSP	TLSP	TLSP

Model F193
1 Gate
2 Body
3 Seat
4 Wiper
5 Bonnet
6 Packing
7 Bolts
8 Gland
9 Stem
10 Yoke
11 Stem Nut



50 psi standard pressure, other pressures available upon request.

Dimensions (Inches) and Weights, Round Bottom

	Size	30	36	42
Face-to-Face	F-F	4-5/8	5-1/4	5-5/8
Flange OD	OD	38-3/4	46	53
Bolt Circle	BC	36	42-3/4	49-1/2
Flanged Raised Face	RF	34	40-1/4	47
Inside Diameter	ID	30	35-7/8	42
No. of Bolt Holes	N	28	32	36
Hole D&T Size	D	1-1/4-7 UNC	1-1/2-6 UNC	1-1/2-6 UNC
C/L to Top-Stem Cover	H-OPN	135	160	185
Handwheel Dia.	H/W	BG4 W 20" HW	BG4 W 20" HW	BG4 W 20" HW
Weight - lbs	WT	3600	4050	6300
Stroke	S	28-13/16	35	40-1/2

The trademarks, logos and service marks displayed in this document herein are the property of Henry Pratt Company, LLC, its affiliates or other third parties. Products above marked with a section symbol (§) are subject to patents or patent applications. For details, visit www.mwppat.com.

Copyright © 2016 Henry Pratt Company, LLC. All Rights Reserved.

Form 13253 9/2016

