

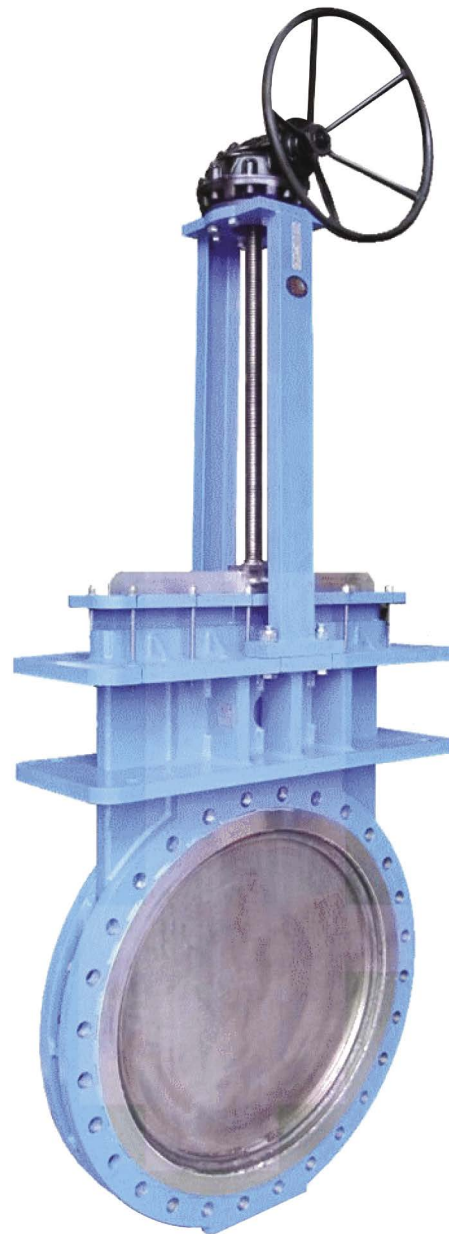
# PRATT®

a MUELLER brand

## LVC FIGURE F77 FABRICATED LARGE DIAMETER Knife Gate Valve

### FEATURES

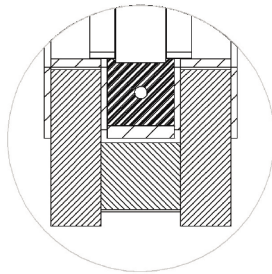
- Fabricated heavy duty carbon steel body, flanges, packing gland, and yoke.
- All stainless steel construction available.
- Fabricated stainless steel liner, seat and raised face. Available in any weldable alloy.
- Precision machined stainless steel gate for superior seating capability. Available in other alloys.
- Bi-Directional Buna resilient seat standard. Also available in EPDM, Viton, Neoprene and other materials. See reverse side for temperature limits.
- Heavy duty designed body to resist deflection from line loads and internal pressure.
- Standard valves designed for 50 or 150 PSI CWP rating. Other pressure ratings also available.
- Heavy fabricated steel yoke will not bend or twist under extreme loads.
- Easy conversion from handwheel operator to hydraulic or pneumatic cylinder, bevel gear, chainwheel, electric motor, or fail safe spring operator.
- Enclosed bronze stem bushing provides reduced operating torque and protects the stem nut in harsh environments.
- Standard TFE lubricated synthetic packing (TLSP).
- Stainless steel stem provides corrosion resistance.
- Sizes include 30", 36", 42", 48", 54", 60", 72", 96" and larger.



**MUELLER**

## MATERIALS OF CONSTRUCTION

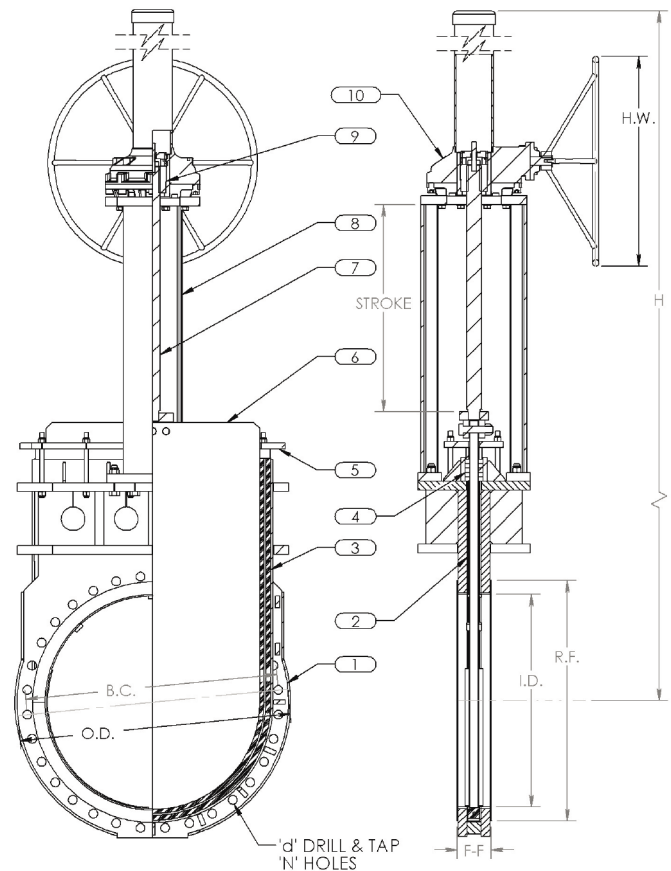
MATERIALS CODE	W44/W66	A44 / A66	A77
Body Liner & RF	304 / 316	304 / 316	317
Flanges, Ext. Trim	Steel	304 / 316	317
Seat**	Buna	Buna	Buna
Gate	304 / 316	304 / 316	317
Packing Gland	Steel	304 / 316	317
Packing Bolting	304	304	304
Yoke	Steel	304 / 316	317
Stem & Clevis	304	304	304
Stem Nut	Bronze	Bronze	Bronze
Packing	TLSP	TLSP	TLSP



### MODEL F77

1	Body
2	Liner
3	Seat
4	Packing
5	Gland
6	Gate
7	Stem
8	Yoke
9	Stem Nut
10	Operator

**MATERIAL	TEMP. LIMITS °F (°C)
Buna	-35 (-37) to 250 (121)
EPDM(P)	-65 (-54) to 300 (149)
Neoprene	-40 (-40) to 225 (107)
Viton	-20 (-29) to 400 (204)



## DIMENSIONS (INCHES)

	SIZE	30	30	36	36	42	42	48	48	54
Pressure Rating		50psi	150psi	50psi	150psi	50psi	150psi	50psi	150psi	50psi
Face-to-Face	F-F	4-5/8	5	5	5-3/4	5-5/8	6-1/4	5-5/8	6-3/8	6-1/2
Flange OD	OD	38-3/4	38-3/4	46	46	53	53	59-1/2	59-1/2	66-1/4
Bolt Circle	BC	36	36	42-3/4	42-3/4	49-1/2	49-1/2	56	56	62-3/4
Flange Raised Face	RF	33-3/4	33-3/4	40-1/4	40-1/4	47	47	52-1/2	53-1/2	59-1/2
Inside Diameter	ID	30	29-1/4	36	36	41-1/4	41-1/4	47-1/2	47-1/2	54
No. of Bolt Holes	N	28	28	32	32	36	36	44	44	44
Hole D&T Size	D	1-1/4"-7	1-1/4"-7	1-1/2"-6	1-1/2"-6	1-1/2"-6	1-1/2"-6	1-1/2"-6	1-1/2"-6	1-3/4"-5
C/L to Top	H	111	111	132	133-9/16	155-1/2	158-3/8	164-1/2	171	189-1/2
Handwheel Dia.	H/W	20	20	20	20	36	36	36	36	36
Stroke	S	30-1/4	29-1/2	36-1/4	36-1/4	41-1/2	41-1/2	47-3/4	47-3/4	54-1/4

Mueller refers to one or more of Mueller Water Products, Inc., a Delaware corporation ("MWP"), and its subsidiaries. MWP and each of its subsidiaries are legally separate and independent entities when providing products and services. MWP does not provide products or services to third parties. MWP and each of its subsidiaries are liable only for their own acts and omissions and not those of each other. MWP brands include Mueller®, Echologics®, Hydro Gate®, Hydro-Guard®, Jones®, MiNet®, Milliken®, Pratt®, Pratt Industrial®, Sentryx®, Singer®, and U.S. Pipe Valve & Hydrant. Please see [www.muellerwpp.com/about](http://www.muellerwpp.com/about) to learn more.

Copyright © 2025 Henry Pratt Company, LLC. All Rights Reserved. The trademarks, logos and service marks displayed in this document are the property of Mueller Water Products, Inc., its affiliates or other third parties. Products above marked with a section symbol (§) are subject to patents or patent applications. For details, visit [www.mwppat.com](http://www.mwppat.com). These products are intended for use in potable water applications. Please contact your Mueller Sales or Customer Service Representative concerning any other application(s).