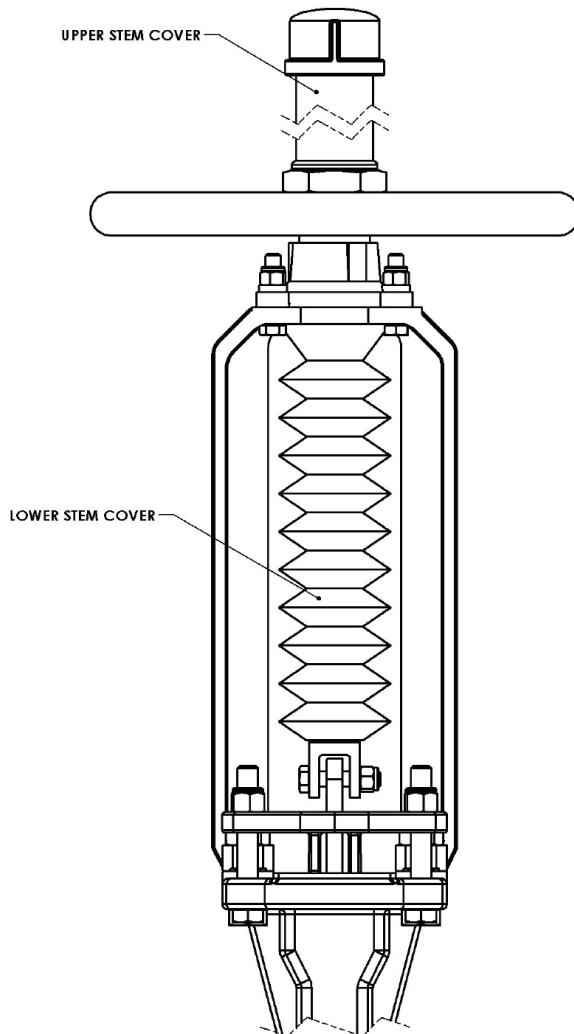
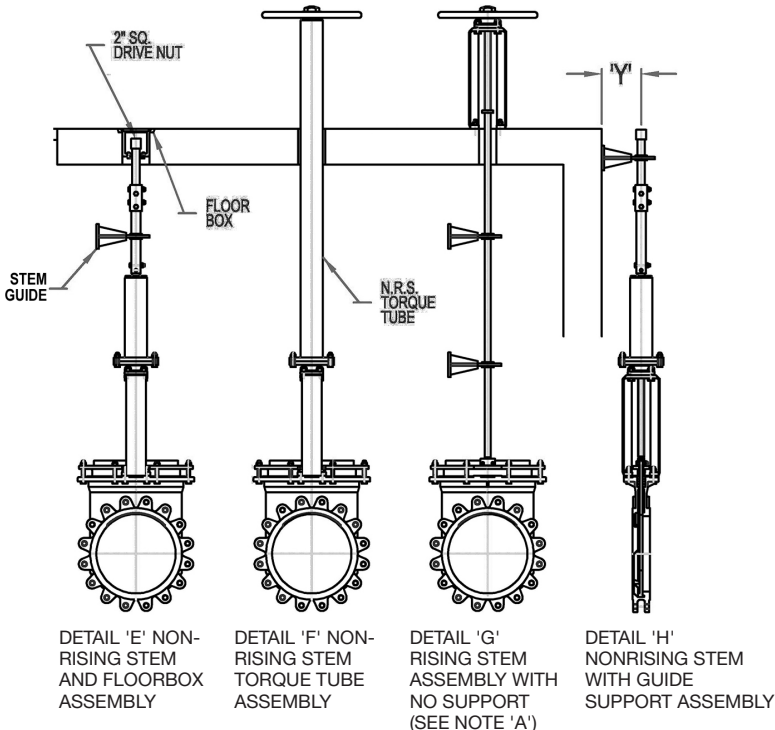
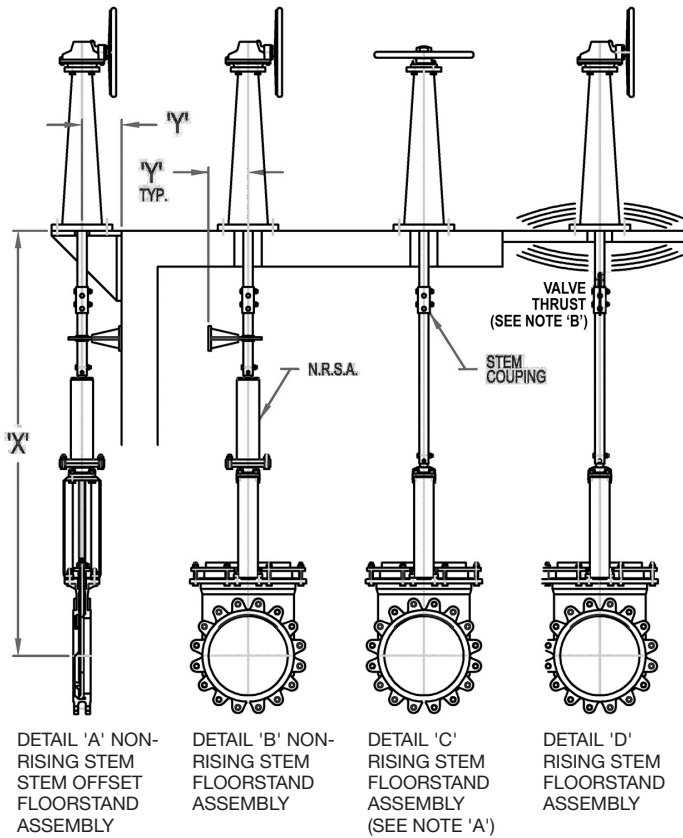


675 Mitchell Avenue
Woodland, WA 98674
Phone: 360-225-1230
888-256-5779
Fax: 360-225-1235
www.henrypratt.com



Features

- Stem covers protect the stem from falling debris and are not necessarily dust tight. For dust tight covers, consult the factory.
- **NOTE:** The lower stem cover may reduce the opening stroke of the valve.



Notes

In order to properly design and price a stem extension assembly certain details must be provided by the customer. They are:

1. 'X' distance from centerline of valve to base of floor-stand or top of floor.
2. 'Y' distance from centerline of valve to base of stem guide, or wall.
3. Maximum differential pressure of valve requirements.

(A) Consult factory before using assemblies in detail 'C' & 'G.'

(B) Floor structure must withstand valve thrust in detail 'D.' Contact factory for valve thrust requirements.

Due to the many variables involved with stem extension design and pricing, it is recommended that you contact the factory to confirm selection. Please reference assembly preferred, dimension as required, valve type and maximum differential pressure of valve to be used.

- N. = NON
- R. = RISING
- S. = STEM
- A. = ADAPTER

The trademarks, logos and service marks displayed in this document herein are the property of Henry Pratt Company, LLC, its affiliates or other third parties. Products above marked with a section symbol (§) are subject to patents or patent applications. For details, visit www.mwppat.com.

Copyright © 2016 Henry Pratt Company, LLC. All Rights Reserved.
Form 13256 9/2016